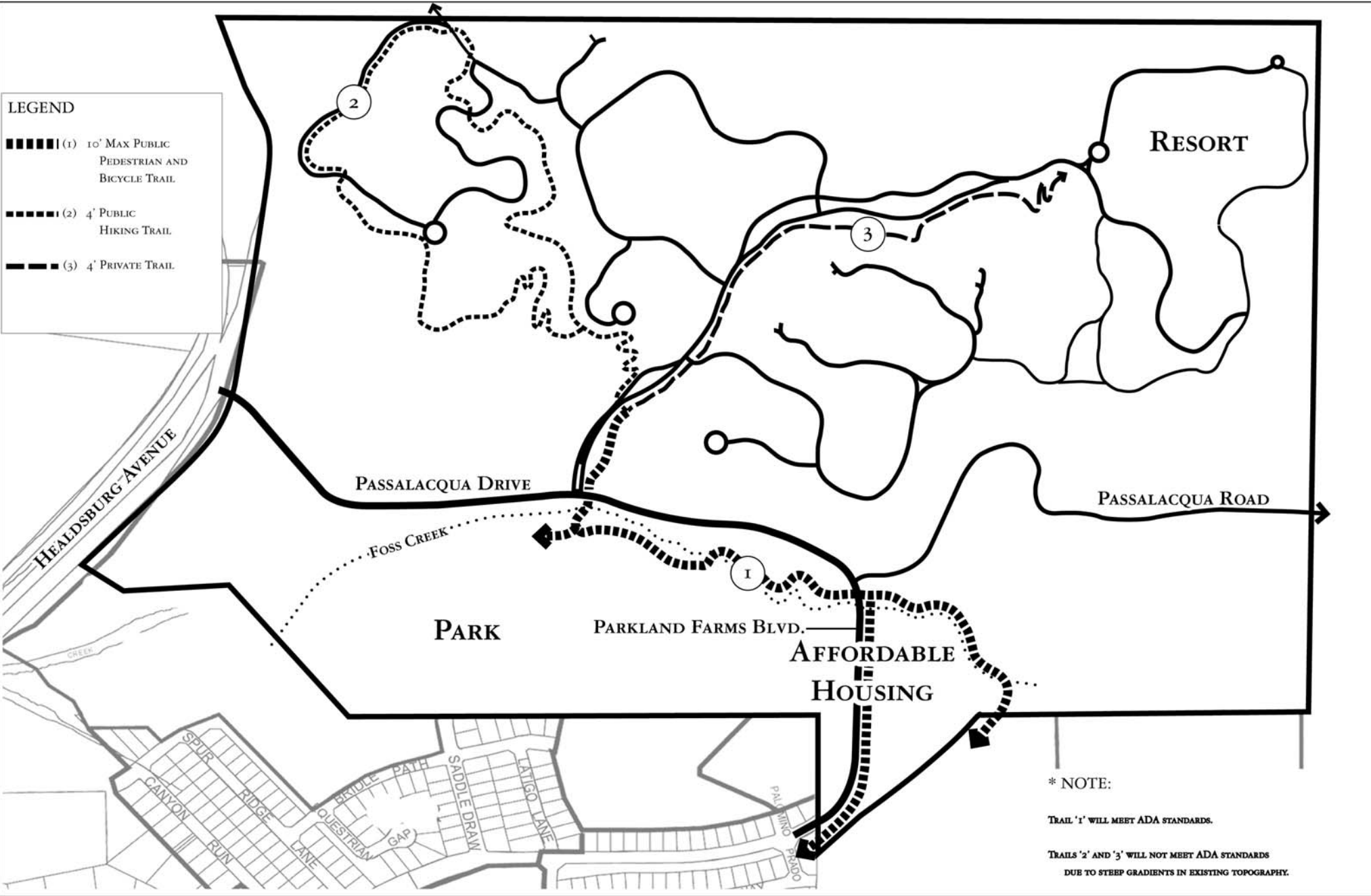
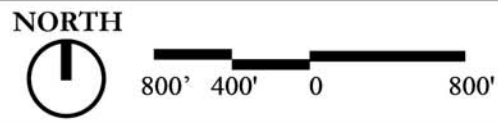


LEGEND

- ▬ (1) 10' MAX PUBLIC PEDESTRIAN AND BICYCLE TRAIL
- ▬ (2) 4' PUBLIC HIKING TRAIL
- ▬ (3) 4' PRIVATE TRAIL



* NOTE:
 TRAIL '1' WILL MEET ADA STANDARDS.
 TRAILS '2' AND '3' WILL NOT MEET ADA STANDARDS
 DUE TO STEEP GRADIENTS IN EXISTING TOPOGRAPHY.



TRAILS PLAN
 Figure 5